

Walk north-west from the Fish Eagle Community Centre, past the car park towards the road. On your right hand side is a large Mitzeeri tree and a large Pigeonwood, both of which are common on this trail. In this area you are also likely to see one of the bird 'specials', the Black-throated Wattle-eye. Another special bird that you may see on this trail is the stunning African Firefinch.

Cross Ladlau Drive and follow the small loop around and over the dam wall back to the road. This dam is the last of the Swallow Pools, all of which are attenuation dams arresting the flow of surface water. Young Flatcrown trees and various young Fig trees are growing below the dam wall. Most of the trees on this walk have been planted in the last few years.

Once you have crossed back over Ladlau Drive you will climb the steepest section of this trail, through restored grassland. This area was covered in sugar cane when Simbithi was still a farm. Grassland attracts a large variety of insects that do not appear in forests and which are preyed on by birds that specialise in grassland habitats. You are likely to see small flocks of Mannikins when the grasses are in seed, as well as Canaries and Grassbirds. The Yellow-throated Longclaw will also be found along these paths.

Look back over the Estate before turning left and then follow the contour path heading north-east. This path is riddled with the diggings of Porcupines that search for roots and bulbs. You will also see the spoor of Bushbuck, Grey Duiker and Common Reedbuck which 'rest up' and forage in these grasslands. All of these buck are more readily spotted at dawn or dusk. If you are early enough in the morning you might hear the male Bushbuck 'barking' at each other as they declare their territorial ranges. During summer you will see a large number of Swallows overhead.

The grasslands release large numbers of small flying insects which are readily devoured by Barn Swallows, Black Saw-wings and White-rumped Swifts, as well as some Lesser Striped Swallows. Both of the latter species nest and breed on the Estate in summer. Of interest too, is the large Dune Sweet Thorn tree. Soaring overhead you will also see Yellow-billed Kites in summer, and Woolly-necked Storks.

Fish Eagles also spend time soaring above our dams and can be heard all over the Estate.. Before and after Tamboti Drive be sure to look out for the Tamboti trees that have given this trail and the road their name.

After crossing Tamboti Drive the path turns towards the sea and you will be able to enjoy magnificent ocean views. There is a suitably positioned bench where you can rest as you look out for whales anytime from late June to February. Continue along the path ignoring a short link to the left. The trail turns sharply south and traverses the seaward-facing slopes.

These slopes are being allowed to return to coastal forest by a natural process of succession. The trees which have been planted on these slopes are predominantly Mitzeeri and White-pear Trees. The grassland will eventually give way to coastal bush and then to forest. These slopes are fanned by moist sea breezes which support a unique fauna and flora.

The succession from grassland to coastal forest will be rapid, given the particular climate prevailing on these slopes. *Strelitzia nicolai* (named after the Tsar Nicolas of Russia) are establishing in this area.

Cross Sicklebush Lane and follow the yellow markers some 20m up the hill where you step over the balustrade and continue the Tamboti trail, which becomes cool and moist as it curves between two blocks of apartments. You will find the small raisin-like droppings of Red Duiker along this section of trail.

The trail crosses Tamboti Drive and descends into Francolin Valley. Tickberry bush has been cleared here to allow the natural grasses and herbs to flourish. In spring this is a good place to see some of the flowers of the herbaceous plants which grow in this area.

Pass the Francolin Pond and you will enter a patch of emerging riverine forest with its large Figs and Macaranga trees. The trail soon joins the golf-cart path, Trimeria Walk, which passes the Fish Eagle Dam wall and returns to the Fish Eagle Community Centre. At this junction you could join the Mfuleni Trail to the Heron Community Centre.

Tamboti Trail

Follow the **YELLOW** trail markers

The Tamboti trail starts and ends at the Fish Eagle Community Centre. This is the "grassland" and "sea view" route and passes a number of smaller dams as well as the Fish Eagle Dam. It rises sharply, traversing open grassland. A bench at the top of the hill affords you time to catch your breath and enjoy some of the best sea views on the Estate. Return via the contour path on coastal dune and through the Francolin Valley with its wild flowers and secluded dam.



African Firefinch

Distance: 3.2km

Duration: +/- 1,5 hours

Ascent/Descent: Gentle +/- 86m

Start: Fish Eagle Community Centre

Trees of the Tamboti Trail

Albizia adianthifolia (Flatcrown)
Apodytes dimidiata (White-pear)
Brachylaena discolor (Coast Silver-oak)
Bridelia micrantha (Mitzeeri)
Clerodendrum glabrum (Cats-whiskers)
Erythrina lysistemon (Coral-tree)
Ficus lutea (Giant-leaf Fig)
Ficus natalensis (Natal Fig)
Ficus polita (Heart-leaf Fig)
Ficus sur (Broom-cluster Fig)
Ficus trichopoda (Swamp Fig)
Grewia occidentalis (Cross-berry Raisin)
Macaranga capensis (River Macaranga)
Sclerocarya birrea caffra (Marula)
Sclerocroton integerrimus (Duiker-berry)
Spirostachys africana (Tamboti)
Strelitzia nicolai (Coast strelitzia)
Syzygium cordatum (Waterberry)
Trema orientalis (Pigeonwood)
Vachellia kosiensis (Dune Sweet Thorn)
Vachellia tortilis (Umbrella thorn)



Birds of the Tamboti Trail

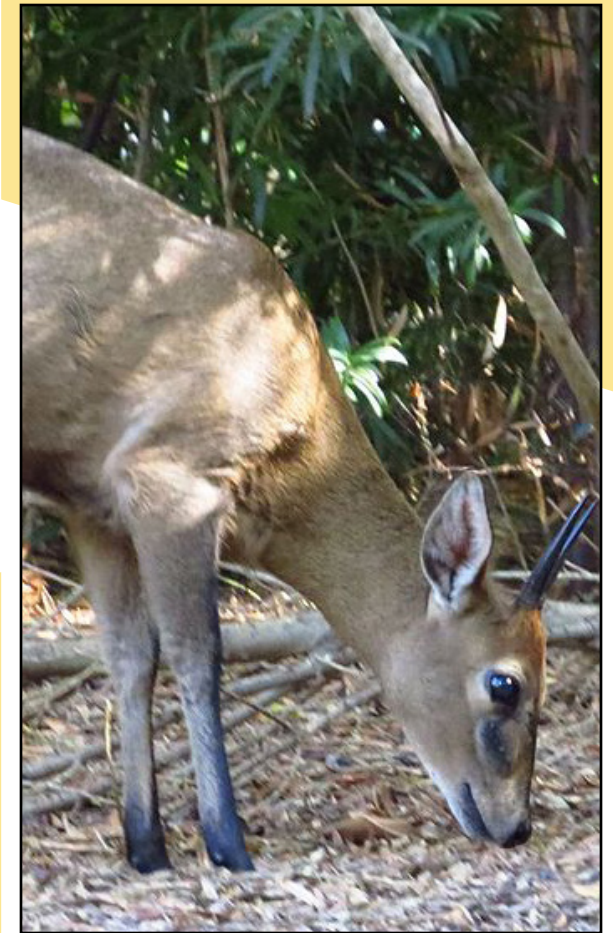
African Firefinch
African Fish Eagle
Barn Swallow
Black-bellied Starling
Black Saw-wing
Black-throated Wattle-eye
Bronze Mannikin
Brown-hooded Kingfisher
Burchell's Coucal
Collared Sunbird
Common Moorhen
Egyptian Goose
Giant Kingfisher
Golden-rumped Tinkerbird
Goliath Heron
Grey Heron

Birds of the Tamboti Trail (cont...)

Lesser Striped Swallow
Little Bee-eater
Little Grebe
Natal Spurfowl
Olive Sunbird
Pied Kingfisher
Purple Heron
Red Bishop
Red-fronted Tinkerbird
Sombre Greenbul
Southern Black Tit
Speckled Mousebird
Thick-billed Weaver
Village Weaver
White-bellied Sunbird
White-breasted Cormorant

Birds of the Tamboti Trail (cont...)

White-browed Scrub Robin
White-eared Barbet
White-rumped Swift
Woolly-necked Stork
Yellow-billed Kite
Yellow-eyed Canary
Yellow-throated Longclaw



Grey Duiker